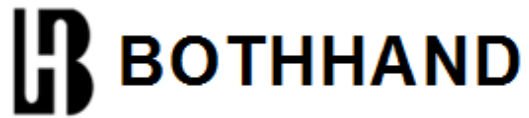


**GH5610RSY-3 LF**  
**DIP 1000 BASE-T Quad Port Discrete**  
**LAN Magnetics**



**Feature**



- Designed for long haul gigabit Ethernet 1000 BASE-T, full duplex applications.
- Supports 16 pairs of category 5 UTP cable.
- Cable interface for isolation and low common mode emissions.
- Complying with IEEE 802.3at standard for 1000 BASE-T.
- Complying with ROHS requirements.
- Operating temperature range: 0°C to +70°C.
- Storage temperature range: -25°C to +85°C.

**Electrical Specifications @ 25°C**

Part Number	Turns Ratio (±5%)		OCL (uH Min) @100KHz/0.1V with 8mA DC Bias	L.L (uH Max)	C <sub>ww</sub> (pF Max)	DCR (Ω Max)	HI-POT
	TX	RX					
GH5610RSY-3 LF	1CT:1CT	1CT:1CT	350	0.5	56	1.0	AC1500V/1mA

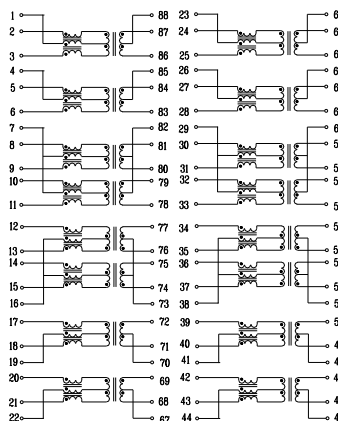
**Continue**

Part Number	Insertion Loss (dB Max)	Return Loss (dB Min @100Ω)				
		1-100MHz	1-30MHz	40MHz	50MHz	60-80MHz
GH5610RSY-3 LF	-1.0	-18	-16	-14.08	-12.5	-10

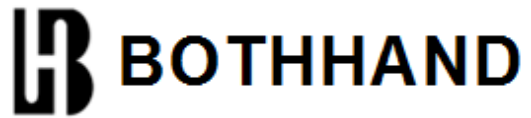
**Continue**

Part Number	Cross talk (dB Min)			DCMR (dB Min)		
	30MHz	60MHz	100MHz	30MHz	60MHz	100MHz
GH5610RSY-3 LF	-40	-35	-30	-43	-37	-33

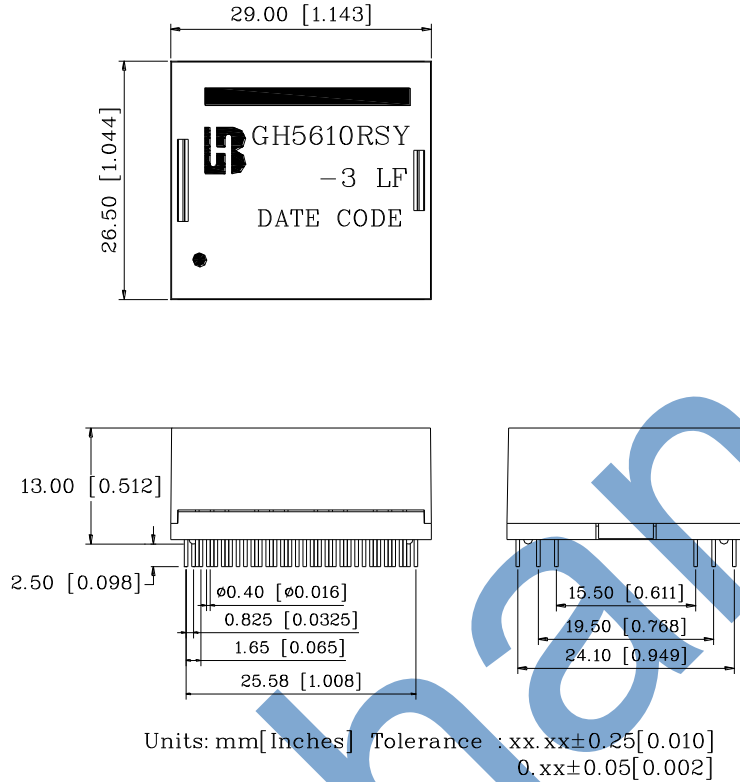
**Schematic**



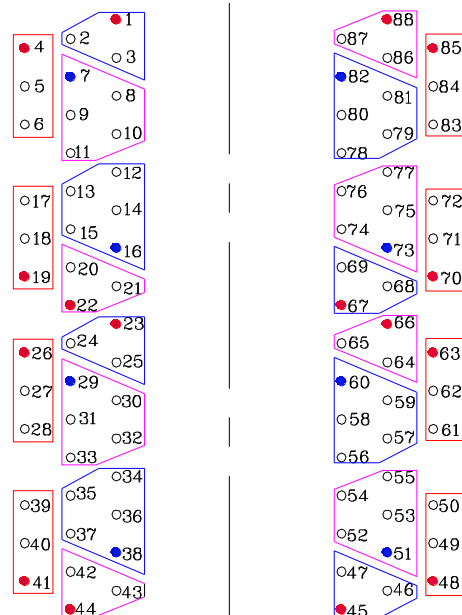
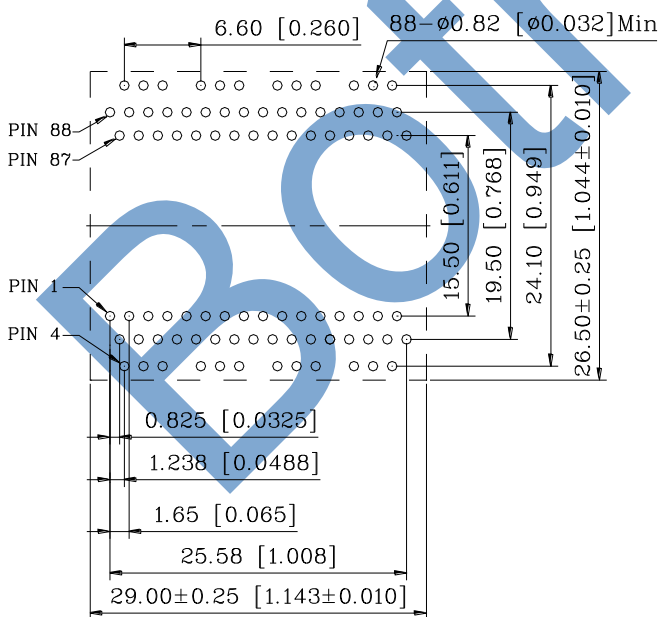
**GH5610RSY-3 LF**  
**DIP 1000 BASE-T Quad Port Discrete**  
**LAN Magnetics**



**Mechanical**



**PCB Layout mounting Hole ( Top View )**

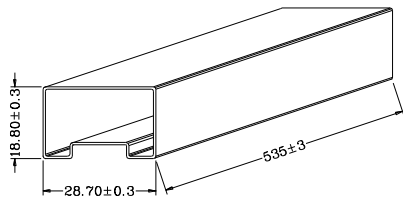


Red : Center Tap  
 Blue : Center Tap

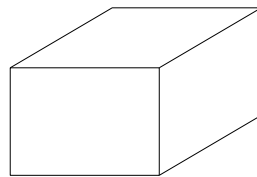
Unless otherwise specified,  
 all dimension tolerance are: ±0.08[±0.003]

---

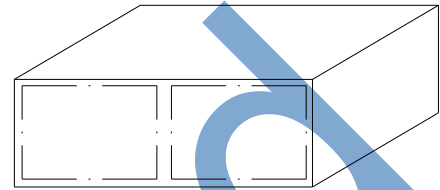
**TUBE PACKAGE**



TUBE



INNER BOX: 567x135x125



OUTER CARTON: 598x287x150

1. 1 TUBE=17PCS
2. 1 INNER BOX=20TUBE=20x17=340PCS
3. 1 OUTER CARTON=2 INNER BOX=2x340=680PCS