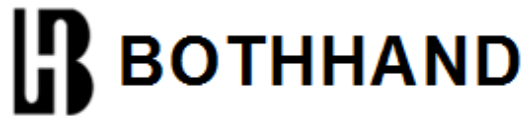
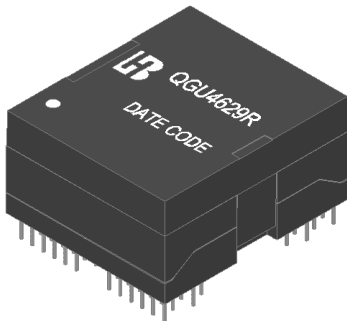


QGU4629R
DIP 2.5G/5G BASE-T Quad Port Discrete
LAN Magnetics



Feature



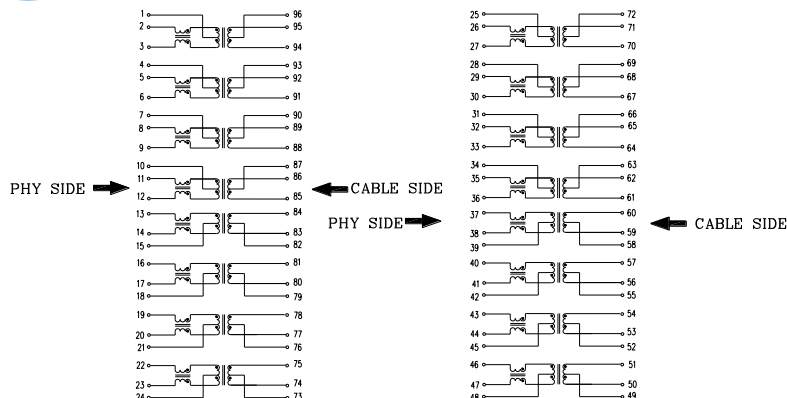
- Design for 2.5G/5G ethernet application.
- Complying with IEEE 802.3at standard.
- POE applications with 600mA current capability.
- Complying with ROHS requirements.
- Operating temperature range: 0°C to +70°C.
- Storage temperature range: -25°C to +85°C.

Electrical Specifications @ 25°C						
Part Number	Turns Ratio (±5%)	OCL (uH Min) @100KHz/0.1V	L.L (uH Max)	CW/W (pF Max)	DCR (Ω Max)	HI-POT
	TX/ RX					
QGU4629R	1CT:1CT	180	0.5	28	0.9	AC1500V/1mA

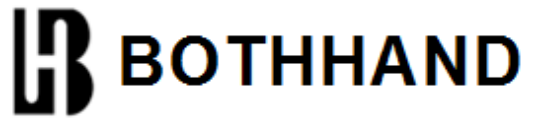
Continue				
Part Number	Insertion Loss (dB Max)		Return Loss (dB Min)@ Load 100Ω	
	1 ≲ f ≲ 100 MHz	100 < f ≲ 250 MHz	1 ≲ f ≲ 40 MHz	40 < f ≲ 250 MHz
QGU4629R	-1.0	-2.0	-16	-(16-10 log ₁₀ (f/40))

Continue					
Part Number	Cross talk (dB Min)		DCMR (dB Min)		
	1 ≲ f ≲ 100 MHz	100 < f ≲ 250MHz	1 < f ≲ 30 MHz	30 < f ≲ 250 MHz	
QGU4629R	$20 \log_{10} \left[10^{\frac{35.3 - 15 \log_{10}(f/100)}{-20}} + 2 \times 10^{\frac{43 - 20 \log_{10}(f/100)}{-20}} \right]$		-30	-48	-(44-19.2 log ₁₀ (f/50))

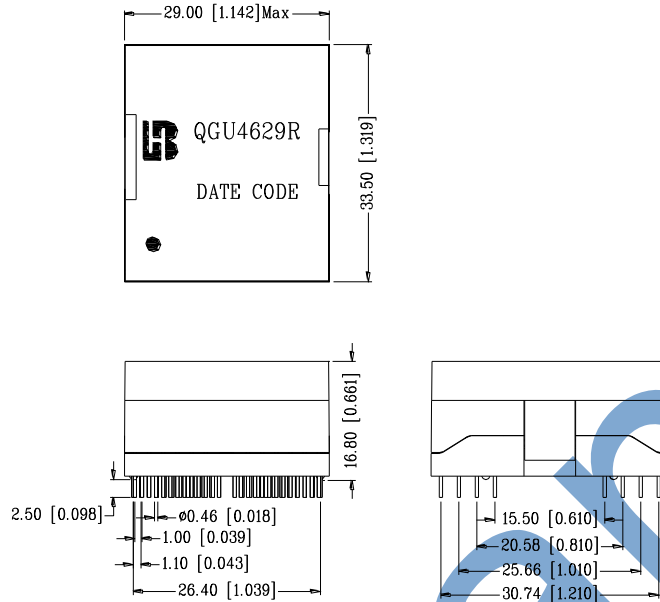
Schematic



QGU4629R
DIP 2.5G/5G BASE-T Quad Port Discrete
LAN Magnetics

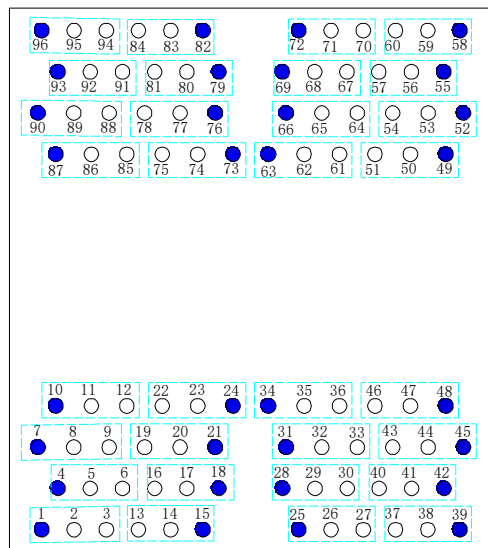
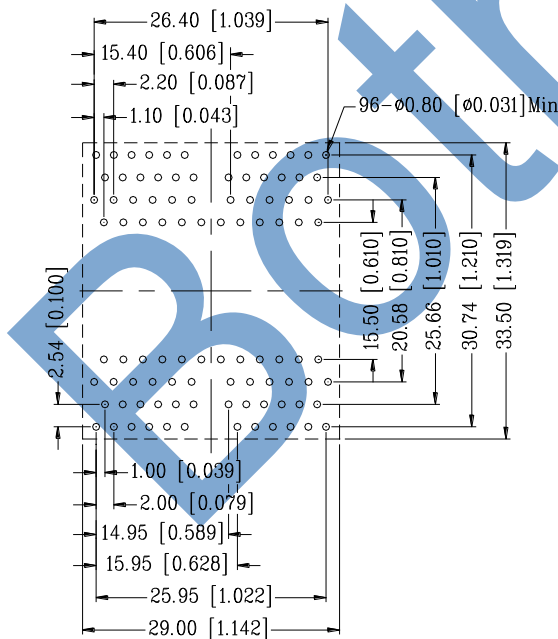


Mechanical



Units: mm[Inches] Tolerance: xx.xx±0.25[0.010]
 0.xx±0.05[0.002]

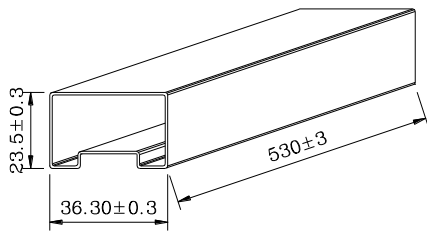
PCB Layout mounting Hole (Top View)



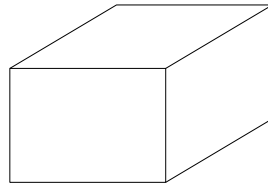
Blue : Center Tap

Unless otherwise specified,
 all dimension tolerance are: ±0.08[±0.003]

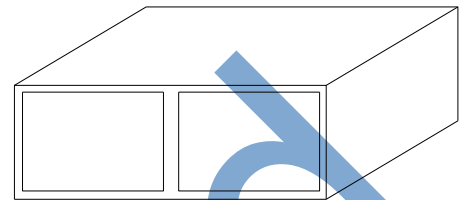
TUBE PACKAGE



TUBE



INNER BOX:567x135x125



OUTER CARTON:598x287x150

1. 1 TUBE=17PCS
2. 1 INNER BOX=12TUBE=12x17=204PCS
3. 1 OUTER CARTON=2 INNER BOX=2x204=408PCS

Bothhand